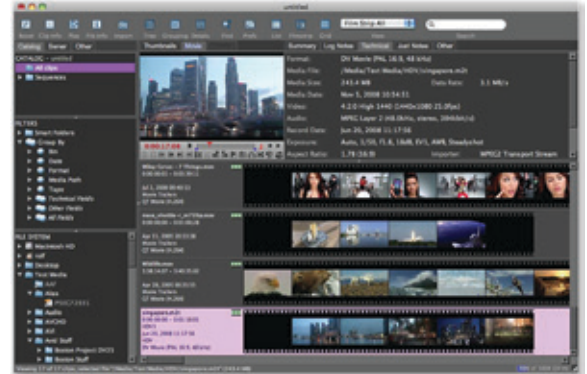


DNAevolution seamlessly integrates into CatDV for LTO/LTFS-based archiving and nearline, and easy content restores.

“As an integrator who's made it my focus to help mid-sized producers deliver at enterprise levels, I appreciate solutions that can handle the pace of modern post production. DNAevolution combines the speed of a direct-attached LTO system, web-based administration and the compatibility of LTFS to provide a fast, reliable archive and retrieval solution for CatDV integrations.”

- **Bryson Jones, Founder, CIO, North Shore Automation**



Faster Archiving and Restore Performance

DNAevolution runs multiple times faster than network deployments as it deploys over FC and SAS giving you the full performance of LTO technology

Fully Integrated into the CatDV Interface

Users can "send-to" and "restore from" the CatDV interface for fully-automated archive and restore pipelines

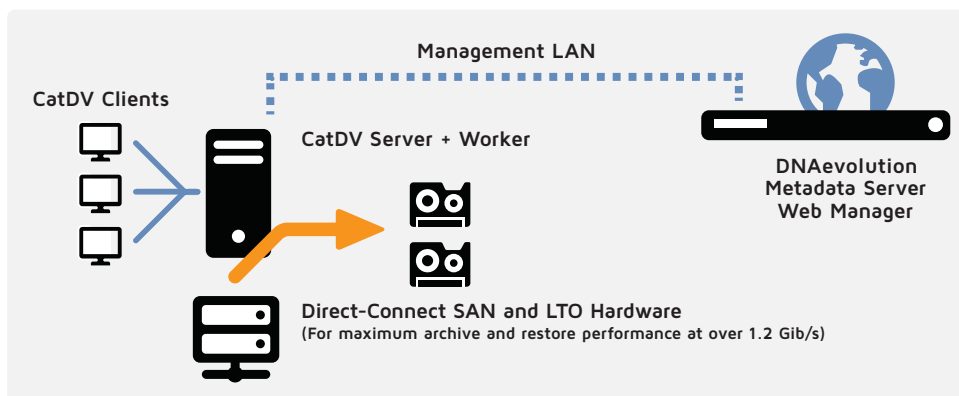
Automated SAN Space Management

Setup policies to automatically "remove from your SAN" or "quarantine" hi-res media for verification

LTO / LTFS for Long-term Protection

DNAevolution uses LTFS to ensure long-term and open access to your hi-res media on LTO tape

Direct Connect LTO Deployment



Archive and Restore From CatDV

Archive and Restore via Avid Interplay Access and Media Composer

ARCHIVE

Users can "send-to-sdna" from the CatDV interface that initiates an automated archive to tape. DNAevolution can also be configured to delete or move media to another location for verification before deletion.

UPDATE

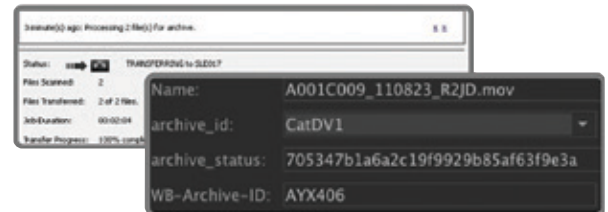
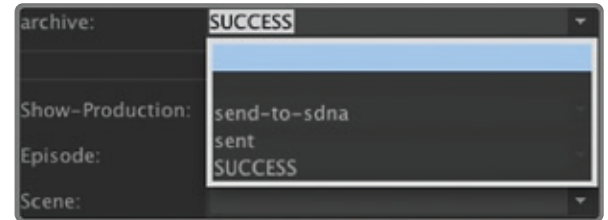
DNAevolution updates the CatDV interface with the archive name, LTO tape serial, and checksum of the file.

MONITOR

Simply visit a web url and you can monitor details of the progress of the archive.

RESTORE

Additionally, DNAevolution allows you to restore from the CatDV interface to the original location or alternate locations.



Alternate High Performance Archive and Ingest Workflow

ARCHIVE FOR CATDV

An alternative to having your archive requests come from CatDV's interface is to set up a CatDV folder-based workflow within DNAevolution. Simply provide DNAevolution with the folders you'd like to archive and DNAevolution will only archive those elements that already exist in CatDV via a folder scan. Existing assets are updated after they are archived, allowing you to see their location on LTO tape from within CatDV.

INGEST FOR CATDV

Optionally, DNAevolution can create a list of assets "NOT" in the CatDV database during the folder scan. This list is compiled into a CatDV batch XML file that allows you to seamlessly import these elements into CatDV via a batch XML import.